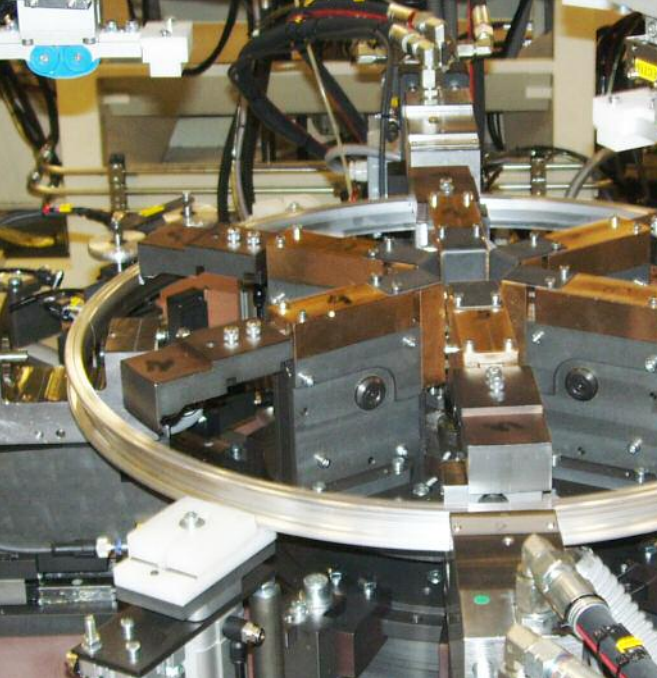


BICYCLE RIM HOLE PUNCHING LINE

(for single and double wall rims)



A production line which is equipped with an automatic loading / unloading device, composed of 3 working stations running fully automatic in masked time:

- Indexation and automatic positioning of rim joint and presence control of both pins
- Punching of spoke and valve holes by 5 hydraulic heads which can be adjusted angularly and radially by master form for acceptance of any rim model from 24" to 29"
- Rim calibrating

The system includes a lubrication station for punches and dies.

Technical specifications

- Range: 20" to 29"
- Production capacity: 140 / 175 rims / hour
- Working air pressure: 6 bar or 90 PSI
- Air consumption: 30 L / min
- Electrical connection: As required by customer
- Power consumption: 14 Kw
- Weight: 1.500 Kg
- Dimensions: 4.20 x 2.95 x 2.00 m
- Safety mark: CE

